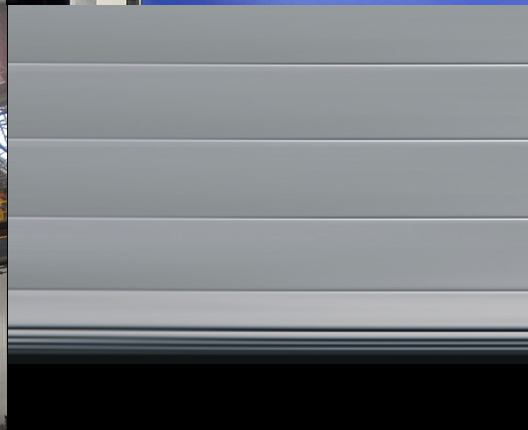
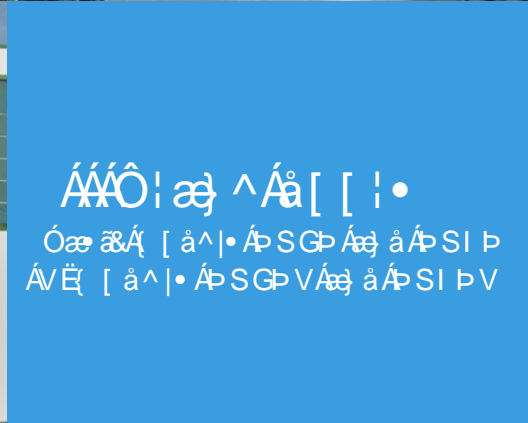


# CHAMPIONDOOR®



From the standpoint of energy economy bridge crane openings are at a critical location – the edge of the ceiling. If the opening cannot be sealed tightly, energy is wasted and the working environment suffers. Champion Door bridge crane opening doors have been designed specifically to eliminate the problems associated with conventional bridge crane openings.

#### BRIDGE CRANE OPENING DOORS ARE AVAILABLE IN TWO DIFFERENT MODELS:

1. An upper model in which the door is at the ceiling line at the location of the bridge crane's tracks.
2. A T-model in which the door extends to the floor, enabling the central part of the door to be used as an access door.  
The crane door can also be used separately and the whole door can be raised when the craneway is in use.  
Opening operations can be programmed from the control panel with impulse controls so that when the access opening is being used, the door opens up to the access opening's upper edge with a single button press; when using the crane, the door opens all the way up to the ceiling by pushing the button twice. In both models the door can also be stopped at the desired position.

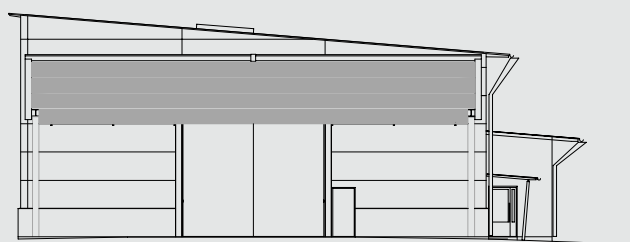
BRIDGE CRANE OPENING DOORS ARE AVAILABLE IN DIFFERENT FRAME STRENGTHS; THE FRAME STRENGTH IS SELECTED ACCORDING TO THE SIZE OF THE DOOR

## TECHNICAL INFORMATION

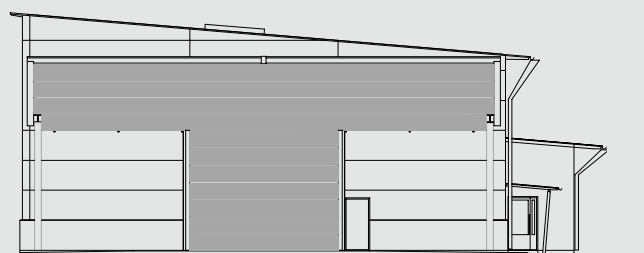
#### CHAMPION DOOR BRIDGE CRANE OPENING DOORS

- Upwards-folding 2-ply fabric fold-up door
- Horizontal beams and side guide rails aluminium, upper housing and lower beam galvanised steel
- Maximum width 40 m
- Raised with lifting straps or steel cables
- Operation by electrical motor equipped with built-in brakes
- Electricity feed with 16 A 3-phase plug, control voltage 24 V (transformer in control panel)
- Control via control panel with 3-button switch; control system ready equipped for various additional accessories (including radio-control, lower edge's impact sensor, pull switch, photo electric cell, radar control, induction control, warning lights)
- Operation can be connected with the crane's control unit.
- Polyester weave reinforced PVC fabric, fire- mildew- and UV resistant, weight 900 g / m<sup>2</sup>; intrusion-proof fabric with titanium mesh also available
- Warm U-value (basic model) 0.71 W / (m<sup>2</sup> \* K), up to 0.57 with additional insulation
- CE-marked

The NK4N and NK4NT models are also furnished with heat insulation wadding. An extensive selection of various additional options and safety accessories is available.



Upper model bridge crane opening door;  
2-ply NK2N and heat-insulated NK4N.



T-model bridge crane opening door;  
2-ply NK2NT and heat-insulated NK4NT.

# CHAMPIONDOOR®

#### Champion Door Oy

Hopeatie 2, FI-85500 Nivala, FINLAND

Tel. + 358 8 445 8800

info@championdoor.com

www.championdoor.com